

BALDOR® • RELIANCE 

Product Information Packet

EM4314T-58

60HP, 1485RPM, 3PH, 50HZ, 364T, A36070M, TEFC

Part Detail							
Revision:	E	Status:	PRD/A	Change #:		Proprietary:	No
Type:	AC	Elec. Spec:	A36WG0820	CD Diagram:	416820-008	Mfg Plant:	
Mech. Spec:		Layout:	617431-412	Poles:	04	Created Date:	06-10-2019
Base:		Eff. Date:	04-24-2020	Leads:	6#6		

Specs			
Catalog Number:	EM4314T-58	Heater Indicator:	No Heater
Enclosure:	TEFC	Insulation Class:	F
Frame:	364T	Inverter Code:	Inverter Ready
Frame Material:	Iron	IP Rating:	NONE
Output @ Frequency:	60.000 HP @ 50 HZ	KVA Code:	G
Synchronous Speed @ Frequency:	1500 RPM @ 50 HZ	Lifting Lugs:	Standard Lifting Lugs
Voltage @ Frequency:	400.0 V @ 50 HZ	Motor Lead Quantity/Wire Size:	6 @ 6 AWG
XP Class and Group:	None	Motor Type:	A36070M
XP Division:	Not Applicable	Mounting Arrangement:	F1
Agency Approvals:	CCSA US	Power Factor:	86
	CE	Product Family:	General Industrial
	WEEE	Pulley End Bearing Type:	Ball
Auxillary Box:	No Auxillary Box	Pulley Face Code:	Standard
Base Indicator:	Rigid	Shaft Ground Indicator:	No Shaft Grounding
Bearing Grease Type:	Polyrex EM (-20F +300F)	Shaft Rotation:	Reversible
Current @ Voltage:	79.100 A @ 400.0 V	Shaft Slinger Indicator:	No Slinger
Design Code:	B	Speed Code:	Single Speed
Drip Cover:	No Drip Cover	Motor Standards:	NEMA

Duty Rating:	CONT	Starting Method:	Wye Start - Delta Run
Feedback Device:	NO FEEDBACK	Thermal Device - Bearing:	None
		Thermal Device - Winding:	None

Nameplate NP2496L

MOBIL POLYREX EM

Nameplate NP2838L**SPEC NO.** A36-0002-0820**IP** 54**TEMP** 64

IE3 - 94.2 (100%) - 95.2(75%) - 95.1(50%)

Nameplate NP3145L										
SPEC NO.	A36-0002-0820			CAT.NO.	EM4314T-58			FRAME	364T	
HP	60	VOLTS	400	PHASE	3	DESIGN	B	TYPE	P	
RPM	1485	AMPS	79.1	HZ	50	AMB	40	SF	1.15	
DRIVE END BEARING	65BC03J30X			DUTY	CONT		INSUL.CLASS	F		
OPP D.E. BEARING	65BC03J30X			ENCL	TEFC		CODE	G		
SER.NO.				POWER FACTOR	86		NEMA-NOM-EFFICIENCY	94.2		
	60HP/45KW					MAX CORR KVAR	12.4		GUARANTEED EFFICIENCY	
	412 KG.					NEMA NOM/CSA QUOTED EFF				
						MOTOR WEIGHT				

Parts List		
Part Number	Description	Quantity
SA372677	SA A36-0002-0820	1.000 EA
RA362427	RA A36-0002-0820	1.000 EA
421948044	LABEL, MYLAR	1.000 EA
NP2496L	MOTOR LUBE NAMEPLATE	1.000 EA
NP2838L	CE EFFICIENCY PLATE,	1.000 EA
000613006PU	N/P (RELEASE QTY 10,000) UL CSA LABEL	1.000 EA
000613006T	N/P, ROTATION	1.000 EA
000692000VD	LABEL WARNING	1.000 EA
LB1594	MYLAR WEEE WHEELIE BIN SYMBOL FOR CE MOT	1.000 EA
NP3145L	SUPER-E ,SS, CSA-C US, LASER	1.000 EA
085922073B	BRKT 360 085922072WCC KB	1.000 EA
415072001B	CLAMP	1.000 EA
078559001A	+FANCV - 360	1.000 EA
034180012DA	KEY 1X4X1/4X1-1/2 L	1.000 EA
702676001C	FAN 360	1.000 EA
004824015A	GREASE POLYREX EM	0.540 LB
032018012DK	HHCS 1/2-13X1-1/2 PLTD.	4.000 EA
032018008AK	HHCS 1/4-20X1 PLATED	4.000 EA
032018024CK	HHCS 3/8-16X3 PLTD.	3.000 EA
415096002A	CPLG 1/8 HEX TYPE	1.000 EA
410700004F	WSHR	1.000 EA
035000001G	GREASE RELIEF FITTING, ALEMITE 317400	1.000 EA
034530052AB	P/NIP 1/8X6-1/2 GALV.	1.000 EA
034690001AB	1/8" NPT SQHDPLG	1.000 EA

Parts List (continued)		
Part Number	Description	Quantity
034600001AA	BUSH 1/4TO1/8 BLACK	1.000 EA
034690001AB	1/8" NPT SQHDPLG	1.000 EA
034600001AA	BUSH 1/4TO1/8 BLACK	1.000 EA
085922073B	BRKT 360 085922072WCC KB	1.000 EA
032018012DK	HHCS 1/2-13X1-1/2 PLTD.	4.000 EA
032018024CK	HHCS 3/8-16X3 PLTD.	3.000 EA
035000001G	GREASE RELIEF FITTING, ALEMITE 317400	1.000 EA
077176000L	C/BOX, 360-400	1.000 EA
077176001A	CBOXC, PAINTED 360-400	1.000 EA
043292000AJ	GASK 320-400	1.000 EA
402731001A	GASK 360-440	1.000 EA
418150003A	GREASE FITTING CAP	1.000 EA
032018005AK	HHCS 1/4-20X5/8 PLATED	4.000 EA
032018008CK	HHCS 3/8-16X1L PLATED	4.000 EA
418199008A	N/P GRD I/D	1.000 EA
418199008B	N/P	1.000 EA
035000001A	ALFTG 1/8" 1610-BL	1.000 EA
415000103D	T/LUG #4AWG-1/0AWG W/HOLE FOR .250 BOLT	1.000 EA
406099000A	PLUG - FAN COVER 320-440	1.000 EA
032018004CK	HHCS 3/8-16X1/2L PLATED	1.000 EA
033512004LB	HHTTS 1/4-20X1/2 PLTD.	1.000 EA
035000001A	ALFTG 1/8" 1610-BL	1.000 EA
418150003A	GREASE FITTING CAP	1.000 EA
MG1025Y17	WILKOFAS, 789.701, SUPER E PEARL GOLD	0.250 GA

Product Information Packet: EM4314T-58 - 60HP,1485RPM,3PH,50HZ,364T,A36070M,TEFC

033775004EA	DRSCR #6-1/4 304 S.S.	2.000 EA
034180034HA	KEY 5/8X5/8X4-1/4 L	1.000 EA
14PA1000	PACKAGING 314 GROUP COMBINED PRINT	1.000 EA
HW1000A32	5/16 FL WASHER WIDE,ID=.344,OD=1.125	3.000 EA
032509020C	CARRIAGE BOLT - 360	3.000 EA

AC Induction Motor Performance Data

Record # 78922 - Typical performance - not guaranteed values

Winding: A36WG0820-R001	Type: A3670M	Enclosure: TEFC
--------------------------------	---------------------	------------------------

Nameplate Data				400 V, 50 Hz: Single Voltage Motor	
Rated Output (HP)	60			Full Load Torque	212.1 LB-FT
Volts	400			Start Configuration	direct on line
Full Load Amps	79.1			Breakdown Torque	546 LB-FT
R.P.M.	1485			Pull-up Torque	341 LB-FT
Hz	50	Phase	3	Locked-rotor Torque	422 LB-FT
NEMA Design Code	B	KVA Code	G	Starting Current	519 A
Service Factor (S.F.)	1.15			No-load Current	25.5 A
NEMA Nom. Eff.	94.2	Power Factor	86	Line-line Res. @ 25°C	0.10217 Ω
Rating - Duty	40C AMB-CONT			Temp. Rise @ Rated Load	64°C
S.F. Amps	91			Temp. Rise @ S.F. Load	74°C
				Locked-rotor Power Factor	36.8

Load Characteristics 400 V, 50 Hz, 60 HP

% of Rated Load	25	50	75	100	125	150	S.F.
Power Factor	54	75	83	86	87	87	87
Efficiency	93.3	95.2	95.2	94.7	94.2	93.8	94.4
Speed	1495.7	1491.9	1487.7	1483.3	1480	1477.9	1481
Line amperes	31.8	44.8	61	79.1	91	98.8	86.2

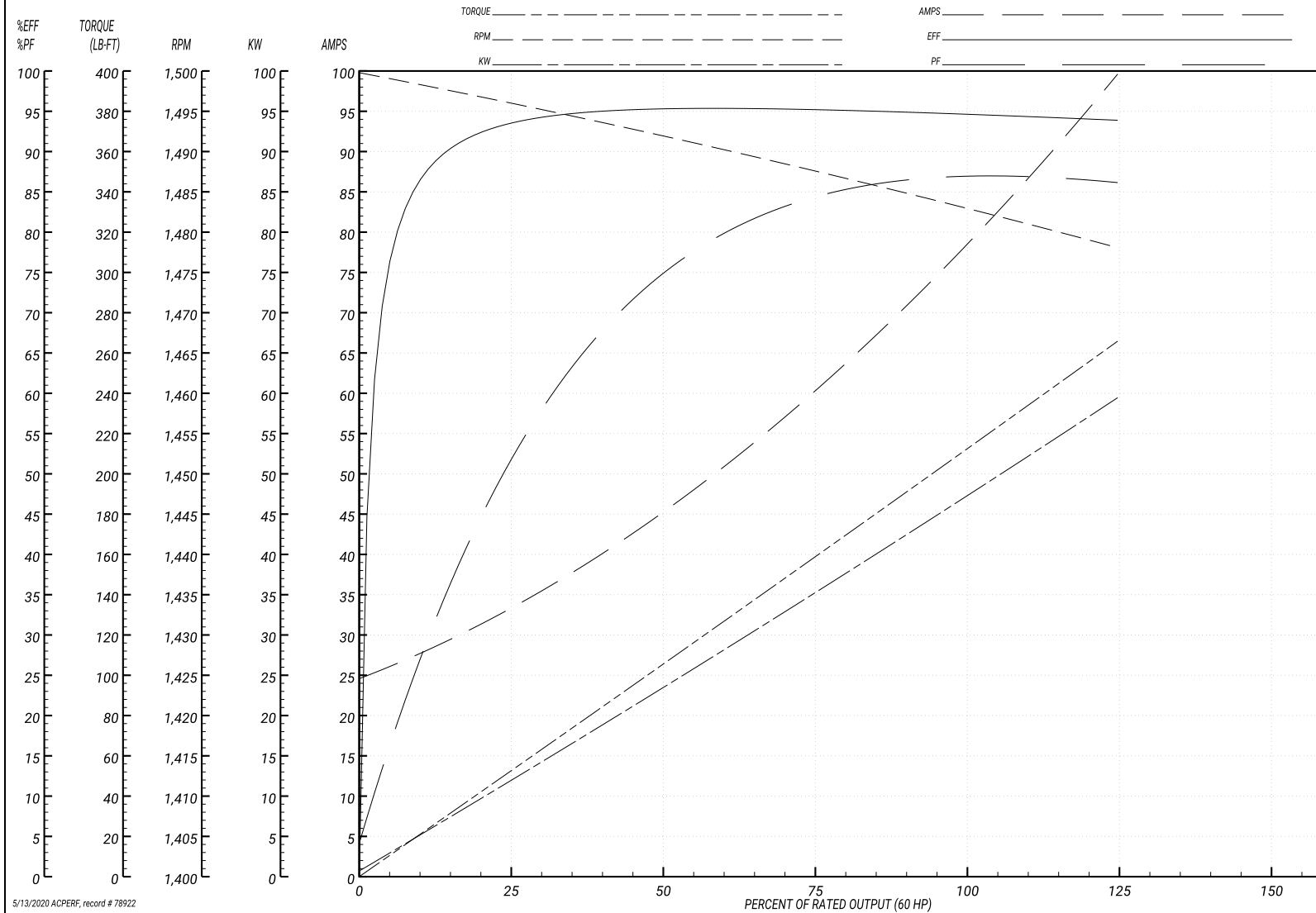
Performance Graph at 0V, 0Hz, 0.0null Typical performance - Not guaranteed values

ABB Motors and Mechanical Inc.

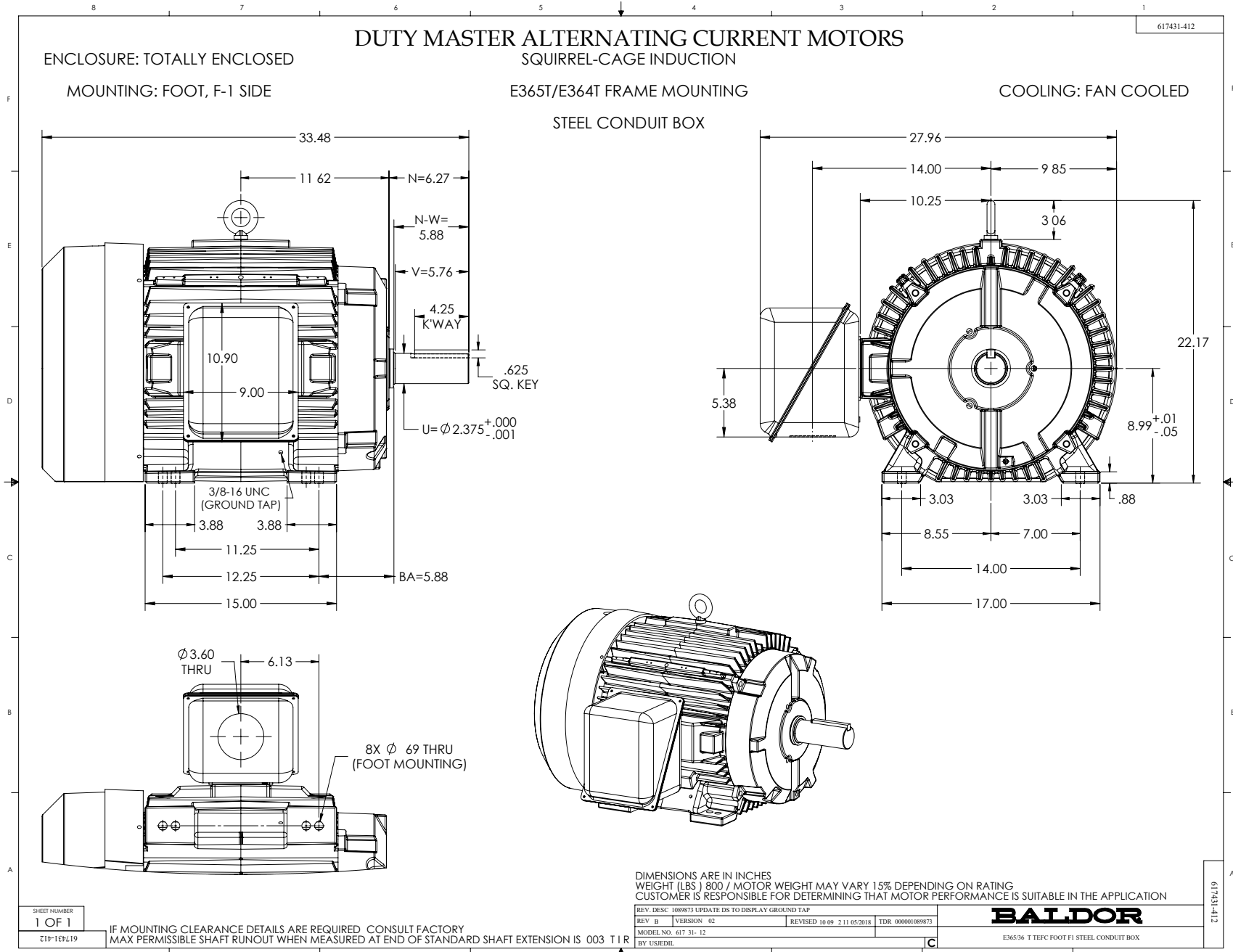
WINDING # A36WG0820

Typical performance - not guaranteed values.

60 HP 3 PH 50 HZ 1485 RPM 400 V A3670M
 TORQUES(LB-FT): PO=546 PU=341 LR=422 LRA=519



5/13/2020 ACPERF, record # 78922

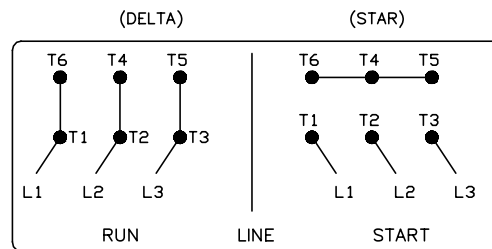
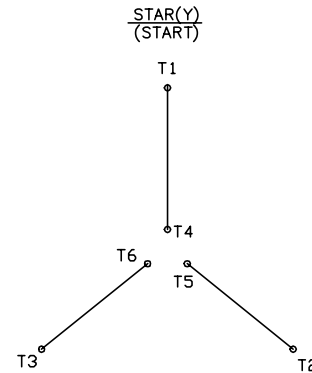
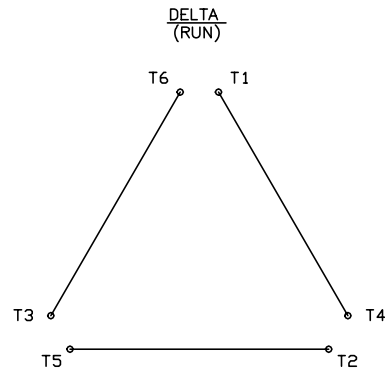


416820-008

A-C MOTOR CONNECTION DIAGRAM

STANDARD 6 LEAD

Y START - DELTA RUN



< N. P. 1767-DC >

416820-008

REV. DESC: ADDED T4 TO Y CONNECT DIAGRAM		
REV. LTR: D	VERSION: 04	TDR: 00000847713
FILE: \RAG\00001\808	REVISED: 10: 41: 26 04/08/2014	BY: RAGJSS1
MTL: -		

BALDOR

CONNECT DIAGRAM STD 6 LEAD Y START DELTA RUN

SH 1 of 1

Marketing maintained PDF of MN408:

[MN408?ManNumber=MN408](#)

Marketing maintained PDF of MN416:

[MN416?ManNumber=MN416](#)